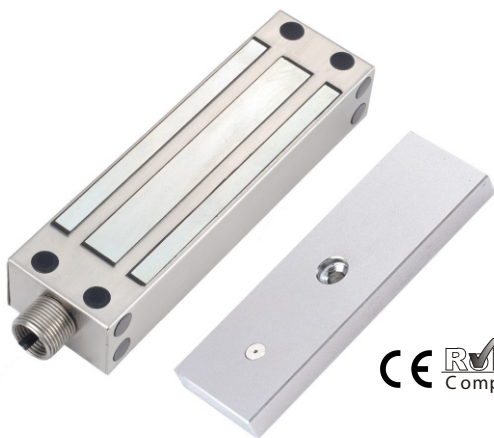


GL-220 Waterproof Gate Lock Series



Special features

- Holding force: 1200lbs(500Kg).
- Power Supply: DC12V or DC24V (adjustable)
- Suitable for Exit door ,Out-swing door and In-swing door.
- Fail safe type. Stainless steel case suitable for outdoors.
- Special surface enhancement process which is anti-rust for its durability.
- For use with any types of the access control unit with built-in surge absorber to prevent any interference to the reader.
- Low power consumption with high efficiency, noise-free and instant demagnetizer when power is off.

Specification		Dimensions
Power Supply	DC 12V or DC24V $\pm 15\%$	<p>Unit: mm</p>
Operation current	460mA@12VDC mA $\pm 5\%$ 220mA@24VDC mA $\pm 5\%$	
Application	90 ° push/pull door	
Holding forces	1200lbs(500Kg)	
Lock status sensor	N.C. Output 0.25 mA (Red switch)	
Demagnetizer design	Instant demagnetizer when power is off.	
Operation temperature	40°C $\pm 5^\circ\text{C}$ (Room temperature 30°C)	
Weight	4900g (included wrapping)	

Related products		Structure diagram
<p>BR-220GL</p>	<p>BR-220GZ</p>	
<p>【SLIDING GATE】</p> <p>Door Leaf Gate post Lock Body BR-220GL(optional)</p>	<p>【SWING GATE】</p> <p>Gate post Gate post Lock Body Armature BR-220GZ(optional)</p>	