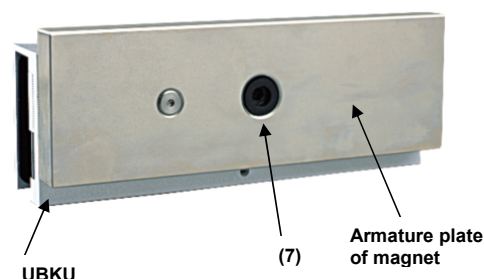


UBK-U Installation Manual



Product Features & Specifications

The UBK-U bracket allows an armature plate to be fitted to a glass door.

- Dimensions:
- Door thickness: fits glass 8-15mm thick
- Armatures: accepts 300kg, 400kg and 500kg series of armatures

Product Contents

Kit includes:

- 1 x U Bracket ----- (1)
- 1 x Fixing Bracket ----- (2)
- 1 x Rubber ----- (9)
- 1 x Clamping Plate ----- (11)
- 3 x Double-side Tape -----(8,10)
- 6 x M4x12 Grub Screws ---(12)
- 1 x Allen Key -----(13)
- 1 x M8x25 Bolt -----(7)

For queries visit our website www.cdvi.co.uk or contact us at
sales@cdvi.co.uk
+44 1628 531300

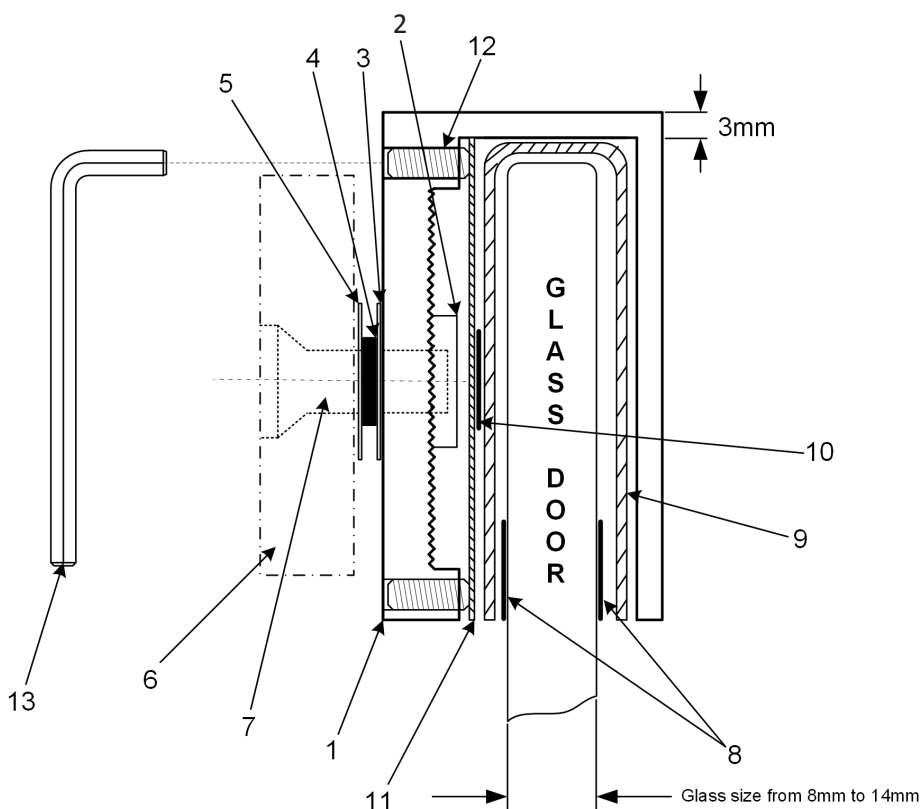
CDVI UK, Unit B1, Knaves Beech Business Centre, Davies Way,
Loudwater, High Wycombe, HP10 9QR



UBK-U Fitting Instructions

The UBK-U bracket allows an armature plate to be fitted to a glass door.

1. Place the rubber (9) on either side of the door and check symmetry. This protects the glass once the UBK-U is fitted to the door (8).
2. Adhere the rubber using the double side tape
3. Place the clamping plate (11) to align on the upper part of the door. Press the clamping plate in order to adhere it to the rubber.
4. Place the U bracket (1) on the rubber and clamping plate. Make sure to check the alignment.
5. Tighten the M4x12 grub screws (12) using the Allen Key (13) and ensure the UBK-U is securely fix.



Armature Plate to UBK-U Fitting Instructions

1. Insert the bolt (7) into the armature plate.
2. Place the a steel washer (5), rubber washer (4) and washer (5) between the armature and the UBK-U.
3. Fix the armature onto the UBK-U bracket, ensuring the armature plate has free movement (float).

For queries visit our website www.cdvi.co.uk or contact us at
sales@cdvi.co.uk
+44 1628 531300

CDVI UK, Unit B1, Knaves Beech Business Centre, Davies Way,
 Loudwater, High Wycombe, HP10 9QR

