

# PRODUCT TECHNICAL DATASHEET

## BR21/351

Brushless 

Intensive use 

Digital Encoder 



CODE	DESCRIPTION	PCS/PALLET
BR21/351	Electromechanical underground motor, BRUSHLESS, low voltage, super intensive use, with native encoder onboard, irreversible, ideal for swing gates with leaf up to 4,5 m. Standard version with 2 m cable.	50

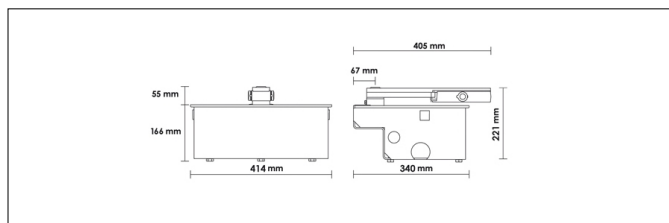
### PRODUCT TECHNICAL SPECIFICATIONS

Power line supply	230V AC - 50Hz
Motor power supply	24V - 36V
Power rating	200W
Frequency of use	Intensive use
Torque	50 - 300 N m
Operating temperature	-20+55°C
Protection level	IP67
Reductor Type	Irreversible
Manoeuvre speed	1,2 Rpm
Opening time	19-29 s
Limit switch	Mechanical stoppers
Recommended digital controllers	230V: EDGE1/BOX - 115V: EDGE1/BOX/115
Encoder	Digital native encoder SENSORLESS 48 PPR
Maximun opening	105° (optional 125° - 360°)
Power supply cable length	2m
Bearing on main shaft	Standard
Operating cycles per day (opening/closing - 24 hours no stop)	1300
Maximum dimension product in mm (L x W x H)	345 x 224 x 144

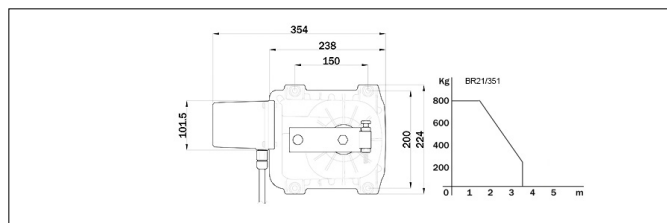
Product weight packed (Kg)	12,6
----------------------------	------

Number items per pallet	50
-------------------------	----

# PRODUCT DIMENSIONS AND PREPARING FOR INSTALLATION



DIMENSIONS



PREDISPOSITION FOR STANDARD INSTALLATION

## PRODUCT ACCESSORIES



**B71/PBX36/BOX**  
Hybrid inverter, "Network Assisted" version, for powering the automation. Also provides a battery-charger function thanks to the connection to the solar panels or mains supply for powering the 36V DC brushless digital controllers with a mains voltage of 230V AC.



**B71/PBX36/BOX/115**  
Hybrid inverter, "Network Assisted" version, for powering the automation. Also provides a battery-charger function thanks to the connection to the solar panels or mains supply for powering the 36V DC brushless digital controllers with a mains voltage of 115V AC.



**B71/PBX/BOX**  
Hybrid inverter, "Full Solar" version, for powering the automation. Also provides a battery-charger function thanks to the connection to the solar panels for powering the brushless digital controllers.



**FU100**  
Cold galvanised foundation box and lid.



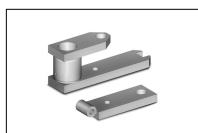
**FU101**  
Hot galvanised foundation box and lid.



**FU102**  
Hot galvanised foundation box and inox and AISI 304 stainless steel lid.



**FU103**  
Inox AISI 304 foundation box and lid.



**LT300**  
Levers for opening up to 125°.



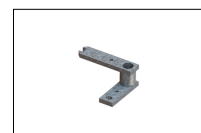
**LT301**  
Levers for opening up to 360°.



**LT301/R**  
Levers for opening up to 360°, with reinforced chain.



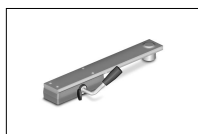
**LT300/90SX**  
Levers for opening up to 103° - 90° turned - left.



**LT300/90DX**  
Levers for opening up to 103° - 90° turned - right.



**LT327/SC**  
Pinion gear 3/4 Z13 of adaptation in pinion combining 3/4 Z16.



**RL650**  
Release system with standard lever.



**RL650/R**  
Release system with standard lever, reinforced steel version.



**RL651**  
Release system with european cylinder key.



**RL663**  
Long release lever for underground.



**R99/C/001AL**  
Signboard "Automatic Opening" Aluminium version.



**R99/C/001**  
Signboard "Automatic Opening".